



Translation of the original operating instructions

Contents

| | | | | | |
|----------|--|-----------|--|--|-----------|
| 1 | GENERAL SAFETY INSTRUCTIONS | 30 | 4.6 | Cleaning preserving agent when starting-up of operation initially | 38 |
| 2 | SAFETY REGULATIONS FOR AIRLESS SPRAYING | 31 | 4.7 | Ventilate unit (hydraulic system) if the sound of inlet valve is not audible | 38 |
| 2.1 | Flash point | 31 | 4.8 | Taking the unit into operation with coating material | 38 |
| 2.2 | Explosion protection | 31 | 5 | SPRAYING TECHNOLOGY | 39 |
| 2.3 | Danger of explosion and fire from sources of ignition during spraying work | 31 | 6 | HANDLING THE HIGH-PRESSURE HOSE | 39 |
| 2.4 | Danger of injury from the spray jet | 32 | 7 | INTERRUPTION OF WORK | 39 |
| 2.5 | Secure spray gun against unintended operation | 32 | 8 | CLEANING THE UNIT | 40 |
| 2.6 | Recoil of spray gun | 32 | 8.1 | Cleaning the unit from the outside | 41 |
| 2.7 | Breathing equipment as protection against solvent vapors | 32 | 8.2 | Suction filter | 41 |
| 2.8 | Prevention of occupational illnesses | 32 | 8.3 | High-pressure filter | 41 |
| 2.9 | Max. operating pressure | 32 | 8.4 | Cleaning the Airless spray gun | 42 |
| 2.10 | High-pressure hose | 32 | 9 | SERVICING | 42 |
| 2.11 | Electrostatic charging (formation of sparks or flames) | 32 | 9.1 | General servicing | 42 |
| 2.12 | Use of units on building sites and workshops | 33 | 9.2 | High-pressure hose | 42 |
| 2.13 | Socket at the unit | 33 | 10 | REPAIRS AT THE UNIT | 43 |
| 2.14 | Ventilation when spraying in rooms | 33 | 10.1 | Inlet valve Pusher | 43 |
| 2.15 | Suction installations | 33 | 10.2 | Inlet valve | 43 |
| 2.16 | Earthing of the object | 33 | 10.3 | Outlet valve | 44 |
| 2.17 | Cleaning the unit with solvents | 33 | 10.4 | Pressure control valve | 44 |
| 2.18 | Cleaning the unit | 33 | 10.5 | Typical wear parts | 44 |
| 2.19 | Work or repairs at the electrical equipment | 33 | 10.6 | Remedy in case of faults | 45 |
| 2.20 | Work at electrical components | 33 | 11 | SPARE PARTS AND ACCESSORIES | 46 |
| 2.21 | Setup on an uneven surface | 33 | 11.1 | Super Finish 23 PLUS accessories | 46 |
| 3 | GENERAL VIEW OF APPLICATION / DESCRIPTION OF UNIT | 34 | 11.2 | Spare parts list Super Finish 23 PLUS | 48 |
| 3.1 | Application | 34 | 11.3 | Spare parts list high-pressure filter | 50 |
| 3.2 | Coating material | 34 | 11.4 | Spare parts List Trolley | 50 |
| 3.2.1 | Coating materials with sharp-edged additional materials | 34 | 11.5 | Spare parts List frame | 51 |
| 3.2.2 | Filtering | 34 | 11.6 | Spare parts list suction system (rigid) | 51 |
| 3.3 | Explanatory diagram | 35 | 11.7 | Spare parts list hopper 5l | 52 |
| 3.4 | Transportation | 35 | 11.8 | Spare parts list hopper with TopClean | 52 |
| 3.5 | Trolley backfitting | 36 | Testing of the unit | 53 | |
| 3.6 | Technical data | 36 | Important information on product liability | 53 | |
| 4 | STARTUP | 37 | Note on disposal | 53 | |
| 4.1 | Unit with suction system | 37 | Guarantee declaration | 53 | |
| 4.2 | unit with upper hopper (5 litres) | 37 | CE - declaration | 53 | |
| 4.3 | high pressure hose and spray gun | 37 | European service network | 108 | |
| 4.4 | Connection to the mains network | 37 | | | |
| 4.5 | Socket on unit (not included in all models) | 38 | | | |

1 GENERAL SAFETY INSTRUCTIONS

WARNING! *Read all safety information, instructions, illustrations and technical data provided with this power tool. Failure to observe the following instructions may cause electric shock, fire and/or severe injuries. Keep all safety information and instructions for future reference. The term "power tool" used in this safety information refers to mains-operated power tools (with power cable) and to battery-powered power tools (without power cable).*



1. Safety at the workplace

- a) **Keep your workplace clean and well lit.** *Disorder or unlit workplaces may result in accidents.*
- b) **Do not work with the power tool in potentially explosive environments where there are flammable fluids, gases or dust.** *Power tools generate sparks that can ignite the dust or vapors.*
- c) **Keep children and other persons away when using the power tool.** *If distracted, you may lose control of the power tool.*

2. Electrical Safety

- a) **The connection plug of the power tool must fit in the socket. The plug may not be modified in any form.** *Verwenden Sie keine Adapterstecker gemeinsam mit schutzgeerdeten Elektrowerkzeugen. Unmodified plugs and suitable sockets reduce the risk of an electric shock.*
- b) **Avoid physical contact with earthed surfaces such as pipes, heating elements, stoves and refrigerators.** *The risk through electric shock increases if your body is earthed.*
- c) **Keep power tools away from rain or moisture.** *Water penetrating into a power tool increases the risk of an electric shock.*
- d) **Do not misuse the power cord to carry the power tool, hang up the power tool or pull the plug out of the socket. Keep the power cord away from heat, oil, sharp edges or moving parts.** *Damaged or entangled power cords increase the risk of an electric shock.*
- e) **If the power tool must be used in a moist environment, use a ground fault circuit interrupter.** *Using a residual current operated circuit-breaker avoids the risk of electric shock.*

3. Safety of Persons

- a) **Be attentive. Pay attention to what you are doing and work sensibly with a power tool. Do not use the power tool if you are tired or under the influence of drugs, alcohol or medication.** *One moment of carelessness when*

using the power tool may cause serious injuries.

- b) **Wear personal safety equipment and always wear safety goggles** *Wearing personal protective equipment, such as dust mask, non-slip safety shoes, safety helm or ear protection, depending on the type of power tools, reduces the risk of injury.*
 - c) **Avoid accidental starting-up. Make sure that the power tool is switched off before you connect it to the power tool and/or battery, pick it up or carry it.** *Accidents may happen if you have your finger on the switch while carrying the power tool or if the device is switched on when you connect it to the power supply.*
 - d) **Remove setting tools or wrenches before switching on the power tool.** *A tool or key in a rotating part of the power tool can cause injuries.*
 - e) **Avoid an unnatural posture. Ensure that you are standing securely and have your balance at all times.** *This allows you can better control the power tool in unexpected situations.*
 - f) **Wear suitable clothing. Do not wear wide clothing or jewellery. Keep your hair, clothes and gloves away from moving parts. Loose clothing, jewellery or long hair can be caught in moving parts.**
 - g) **Do not lull yourself into a false sense of security and do not think yourself above the safety rules for electric tools, even if you are familiar with the electric tool following extensive practical experience.** *Careless use can lead to serious injuries in fractions of a second.*
- ### 4. Usage and treatment of the electric tool
- a) **Do not overload the power tool. Use the power tool designed for the work that you are doing.** *You work better and safer in the specified performance range if you use the suitable power tool.*
 - b) **Do not use power tools whose switch is defective.** *A power tool that cannot be switched on or off is dangerous and has to be repaired.*
 - c) **Disconnect the plug from the socket and/or take out a removable battery before you make device adjustments, change accessories or put the power tool away.** *This precautionary measure prevents the power tool from starting unintentionally.*
 - d) **Store unused power tools so that they are inaccessible to children. Do not let persons use the tool who are not familiar with it or who have not read these instructions.** *Power tools are dangerous when they are used by inexperienced persons.*
 - e) **Maintain the power tool and insertion tools with care. Check whether moving device parts are working**

flawlessly and are not jamming, whether parts are broken or damaged so that as to impair the function of the power tool. Have damaged parts repaired before using the power tool. Many accidents have their origin in power tools that have been maintained badly.

f) Use the power tool, accessories, insert tools, etc. in accordance with these instructions and in a fashion specified for this special tool type. Take the working conditions and the activity to be carried out into consideration. The use of power tools for purposes other than the intended ones can lead to dangerous situations.

g) Keep the handles and grip surfaces dry, clean and free of oil and grease. Slippery handles and grip surfaces hamper safe operation and control of the electric tool in unforeseen situations.

5. Service

a) Only have your power tool repaired by a qualified specialist and only use original spare parts. This ensures that the tool safety is maintained.

b) If the supply cord is damaged, it must be replaced by the manufacturer or it's service agent or a similarly qualified person in order to avoid a safety hazard.


2 SAFETY REGULATIONS FOR AIRLESS SPRAYING

All local safety regulations in force must be observed. The following sources are just a sample of those containing safety requirements for Airless spraying.


- a) The European Standard „Spray equipment for coating materials – safety regulations„ (EN 1953).

The following safety regulations are to be observed in order to ensure safe handling of the Airless high-pressure spraying unit.


2.1 FLASH POINT

| | |
|---|---|
|  Danger | <p>Only spray coating materials with a flash point of 21 °C or higher. The flash point is the lowest temperature at which vapors develop from the coating material. These vapors are sufficient to form an inflammable mixture over the air above the coating material.</p> |
|---|---|



2.2 EXPLOSION PROTECTION

| | |
|--|---|
|  Danger | <p>Do not use the unit in work places which are covered by the explosion protection regulations. The unit is not designed to be explosion protected. Do not operate the device in explosive areas (zone 0, 1 and 2). Explosive areas are, for example, places where paints are stored and locations in direct proximity to the object being sprayed. Keep the device at least 3 m from the object you are spraying.</p> |
|--|---|

2.3 DANGER OF EXPLOSION AND FIRE FROM SOURCES OF IGNITION DURING SPRAYING WORK

| | |
|--|---|
|  Danger | <p>There must be no sources of ignition such as, for example, open fires, lit cigarettes, cigars or tobacco pipes, sparks, glowing wires, hot surfaces, etc. in the vicinity.</p> |
|--|---|


2.4 DANGER OF INJURY FROM THE SPRAY JET

| | |
|---|---|
|  Danger | <p>Attention, danger of injury by injection! Never point the spray gun at yourself, other persons or animals.</p> <p>Never use the spray gun without spray jet safety guard.</p> <p>The spray jet must not come into contact with any part of the body.</p> <p>In working with Airless spray guns, the high spray pressures arising can cause very dangerous injuries. If contact is made with the spray jet, coating material can be injected into the skin. Do not treat a spray injury as a harmless cut. In case of injury to the skin by coating material or solvents, consult a doctor for quick and correct treatment. Inform the doctor about the coating material or solvent used.</p> |
|  | |

2.5 SECURE SPRAY GUN AGAINST UNINTENDED OPERATION

Always secure the spray gun when mounting or dismounting the tip and in case of interruption to work.

2.6 RECOIL OF SPRAY GUN

| | |
|---|--|
|  Danger | <p>When using a high operating pressure, pulling the trigger guard can effect a recoil force up to 15 N.</p> <p>If you are not prepared for this, your hand can be thrust backwards or your balance lost. This can lead to injury.</p> |
|---|--|

2.7 BREATHING EQUIPMENT AS PROTECTION AGAINST SOLVENT VAPORS

Wear breathing equipment during spraying work. A breathing mask is to be made available to the user.

2.8 PREVENTION OF OCCUPATIONAL ILLNESSES


Protective clothing, gloves and possibly skin protection cream are necessary for the protection of the skin.

Observe the regulations of the manufacturer concerning coating materials, solvents and cleaning agents in preparation, processing and cleaning units.


2.9 MAX. OPERATING PRESSURE

The permissible operating pressure for the spray gun, spray gun accessories, unit accessories and high-pressure hose must not fall short of the maximum operating pressure of 25 MPa (250 bar or 3625 psi).


2.10 HIGH-PRESSURE HOSE

| | |
|--|--|
|  Danger | <p>Attention, danger of injury by injection! Wear and tear and kinks as well as usage that is not appropriate to the purpose of the device can cause leakages to form in the high-pressure hose. Liquid can be injected into the skin through a leakage.</p> |
|--|--|

- High-pressure hoses must be checked thoroughly before they are used.
- Replace any damaged high-pressure hose immediately.
- Never repair defective high-pressure hoses yourself!
- Avoid sharp bends and folds: the smallest bending radius is about 20 cm.
- Do **not drive over** the high-pressure hose. Protect against sharp objects and edges.
- Never pull on the high-pressure hose to move the device.
- Do not twist the high-pressure hose.
- Do not put the high-pressure hose into solvents. Use only a wet cloth to wipe down the outside of the hose.
- Lay the high-pressure hose in such a way as to ensure that it cannot be tripped over.

| | |
|---|--|
|  | <p>Only use WAGNER original-high-pressure hoses in order to ensure functionality, safety and durability.</p> |
|---|--|

2.11 ELECTROSTATIC CHARGING (FORMATION OF SPARKS OR FLAMES)

| | |
|--|--|
|  Danger | <p>Electrostatic charging of the unit may occur during spraying due to the flow speed of the coating material. These can cause sparks and flames upon discharge. The unit must therefore always be earthed via the electrical system. The unit must be connected to an appropriately-grounded safety outlet.</p> |
|--|--|

An electrostatic charging of spray guns and the high-pressure hose is discharged through the high-pressure hose. For this reason the electric resistance between the connections of the high-pressure hose must be equal to or lower than 1 MΩ.

2.12 USE OF UNITS ON BUILDING SITES AND WORKSHOPS

The unit may only be connected to the mains network via a special feeding point with a residual-current device with INF ≤ 30 mA.

2.13 SOCKET AT THE UNIT

Do not load the socket with more than 1500 Watt. Unroll any connected cable drum completely.

2.14 VENTILATION WHEN SPRAYING IN ROOMS

Adequate ventilation to ensure removal of the solvent vapors has to be ensured.


2.15 SUCTION INSTALLATIONS

The are to be provided by the unit user in accordance with the corresponding local regulations.


2.16 EARTHING OF THE OBJECT

The object to be coated must be earthed.
(Building walls are usually earthed naturally)

2.17 CLEANING THE UNIT WITH SOLVENTS

| | |
|--|--|
|  Danger | <p>When cleaning the unit with solvents, the solvent should never be sprayed or pumped back into a container with a small opening (bunghole). An explosive gas/air mixture can arise. The container must be earthed.</p> |
|--|--|

2.18 CLEANING THE UNIT

| | |
|--|---|
|  Danger | <p>Danger of short-circuits caused by water ingression! Never spray down the unit with high-pressure or high-pressure steam cleaners.</p> |
|--|---|

2.19 WORK OR REPAIRS AT THE ELECTRICAL EQUIPMENT

These may only be carried out by a skilled electrician. No liability is assumed for incorrect installation.

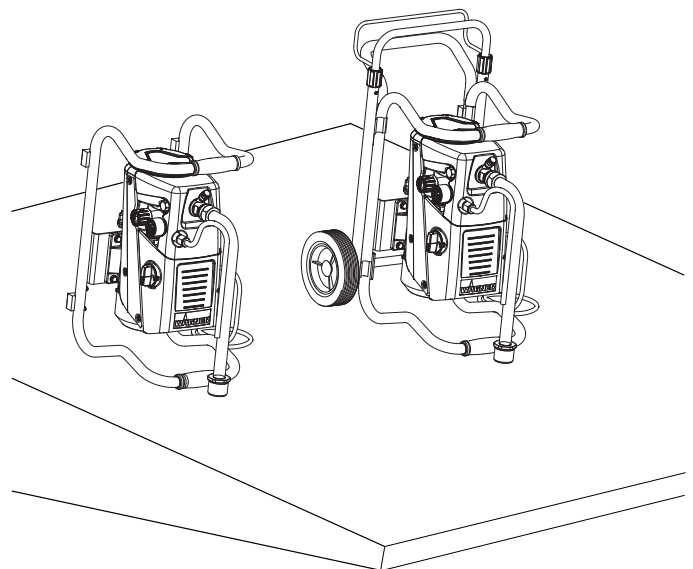
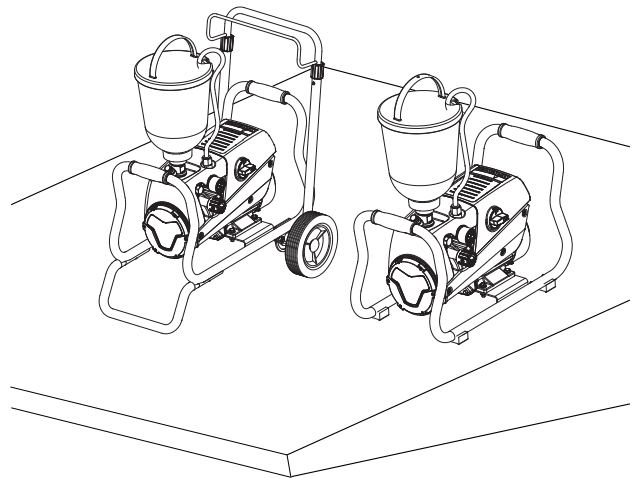
2.20 WORK AT ELECTRICAL COMPONENTS

Unplug the power plug from the outlet before carrying out any repair work.

2.21 SETUP ON AN UNEVEN SURFACE

The front end must always point downwards in order to avoid sliding away.

If possible do not use the unit on an inclined surface since the unit tends to wander through the resulting vibrations.



3 GENERAL VIEW OF APPLICATION / DESCRIPTION OF UNIT

3.1 APPLICATION

Super Finish 23 PLUS is an electric driven unit for the airless atomization of different painting materials. Also it is able to feed the internal feeded paint roller, which is available as accessory.

Super Finish 23 PLUS is made for jobs in the workshop and on the building site.

The unit performance is conceived so that its use is possible on building sites for small- to middle-area dispersion work.

When painting, the device is suitable for all kinds of typical painting jobs, e.g.:


doors, door frames, balustrades, furniture, woodencladding, fences, radiators (heating) and steel parts.

We recommend using the top container for paintwork.


3.2 COATING MATERIAL

Diluting lacquers and paints or those containing solvents, two-component coating materials, dispersion and latex paints.

No other materials should be used for spraying without WAGNER's approval.

| | |
|--|--|
|  | Pay attention to the Airless quality of the coating materials to be processed. |
|--|--|

The unit is able to process coating materials with up to 20,000 mPas. If highly viscous coating materials cannot be taken in or the performance of the unit is too low, the paint must be diluted in accordance with the manufacturer's instructions.

| | |
|--|---|
|  | Attention: Make sure, when stirring up with motor-driven agitators that no air bubbles are stirred in. Air bubbles disturb when spraying and can, in fact, lead to interruption of operation. |
|--|---|

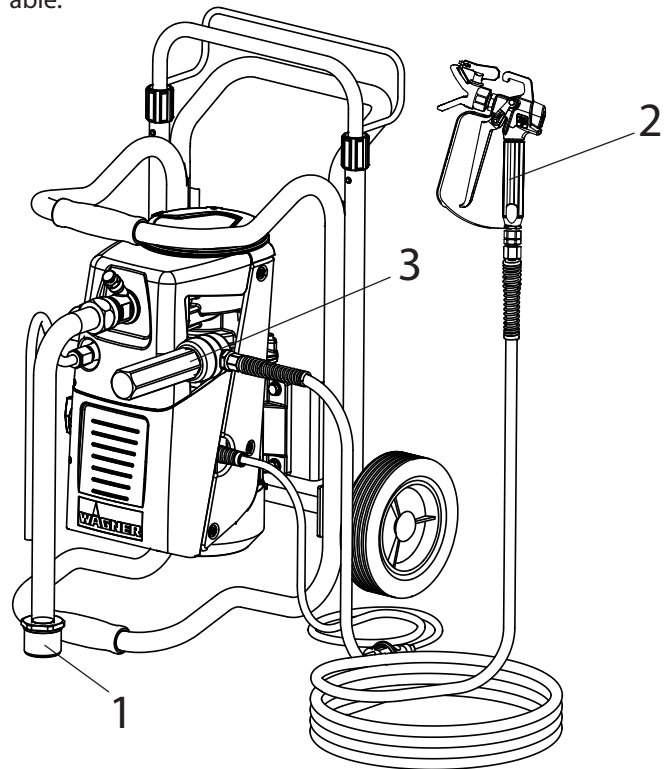
3.2.1 COATING MATERIALS WITH SHARP-EDGED ADDITIONAL MATERIALS

These particles have a strong wear and tear effect on valves and tips, but also on the heating hose and spray gun. This impairs the durability of these wearing parts considerably.

3.2.2 FILTERING

Sufficient filtering is required for fault-free operation. To this purpose the unit is equipped with a suction filter (Item 1) and an insertion filter in the spray gun (Item 2). Regular inspection of these filters for damage or soiling is urgently recommended.

A high-pressure filter (Item 3) -available as accessory- is rising up the filtering surface and will make the work more comfortable.





Detailed information on how our devices work and the different application methods can be found at

<https://go.wagner-group.com/technology>

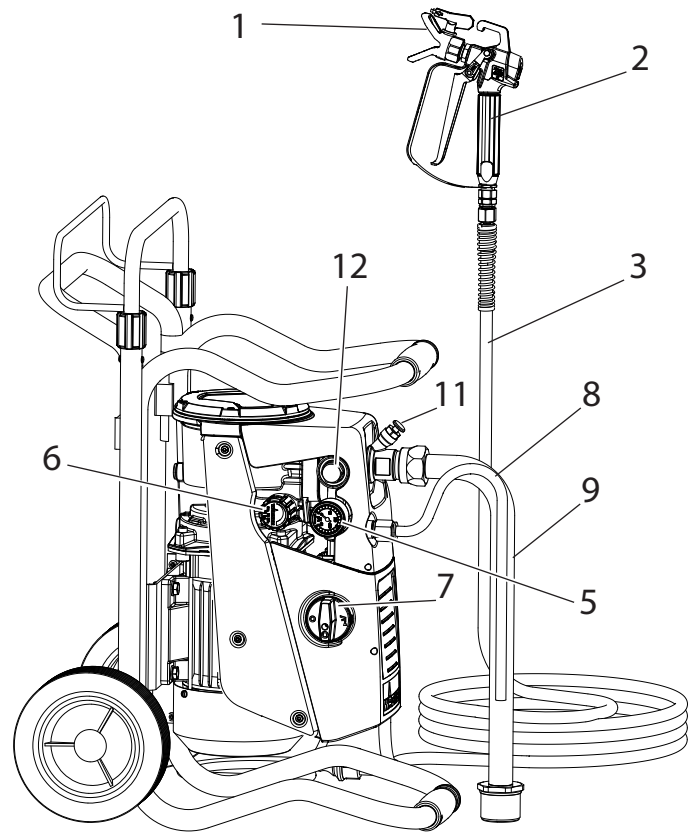
3.3 EXPLANATORY DIAGRAM

- 1 Tip guard with airless tip
 - 2 Spray gun
 - 3 High-pressure hose
 - 4 Connection for high-pressure hose
 - 5 Pressure gauge
 - 6 Pressure control valve
 - 7 Multifunction switch
- Symbols (shown in the recess of the switch):

- 0** OFF
-  ON / Circulation
-  ON / Spraying

- 8 Return tube
- 9 Suction tube
- 10 Hopper
- 11 Inlet valve button
- 12 Outlet valve
- 13 Socket, max. load 1500 Watt*
- 14 Oil measuring stick

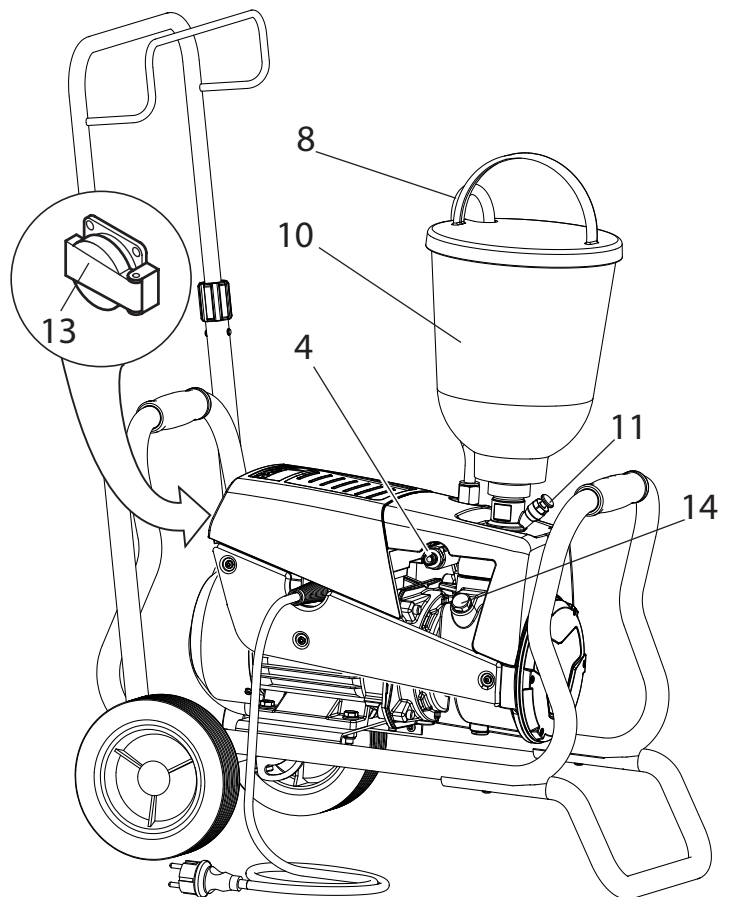
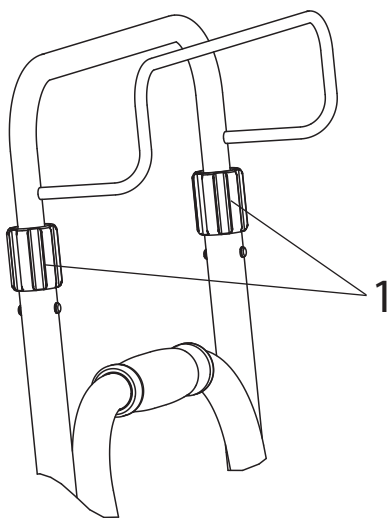
*not included in all models



3.4 TRANSPORTATION

Unroll high-pressure hose and lay it over the shaft.

Loosen terminal sleeves (item 1) on the shaft (U open). Extract shaft to the desired length. Tighten terminal sleeves again by hand (U closed).

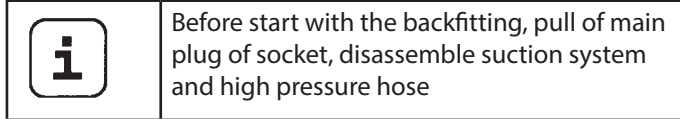


Transportation in vehicle

Secure the unit in the vehicle by means of suitable fasteners. The device can be placed on its side if necessary. In this case, please ensure that no attachments can be damaged. Attention: Paint or solvent residues can escape from the connections!

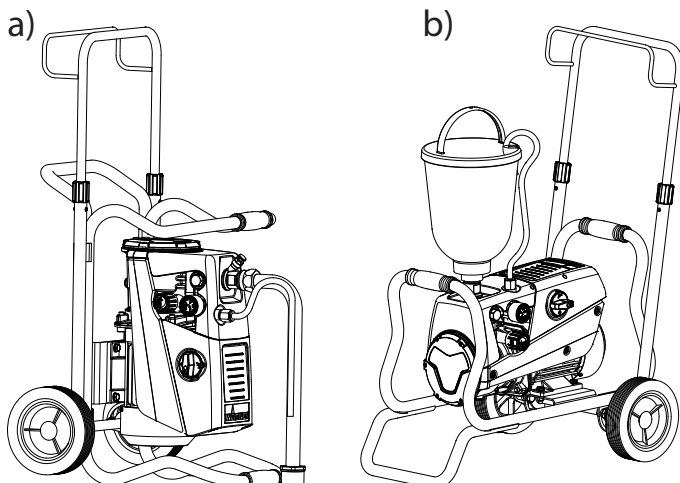
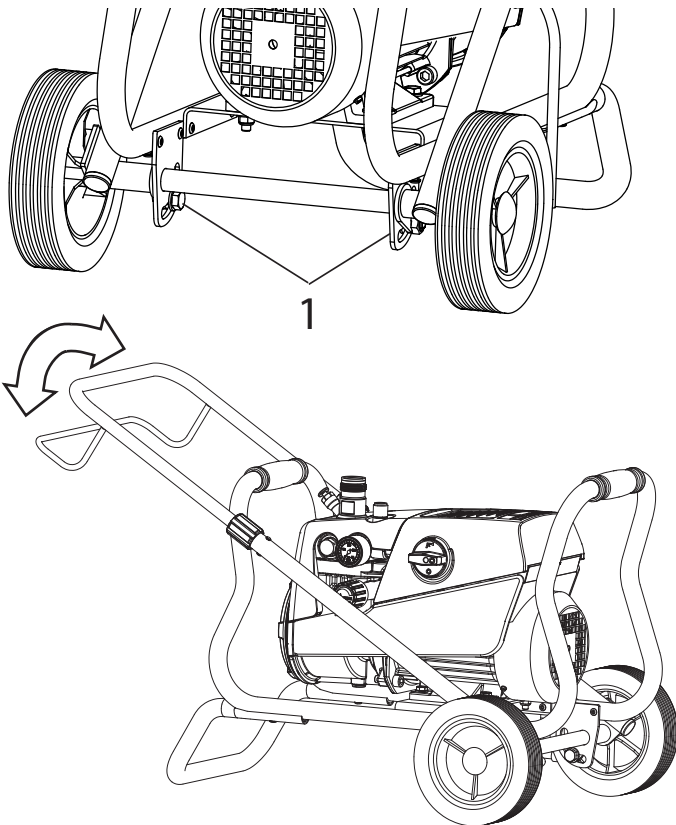
DESCRIPTION OF UNIT

3.5 TROLLEY BACKFITTING



When changing between the top container and the suction system, the carriage needs to be altered.

1. Unscrew the screws (pos. 1) with the attached wrench (17 mm).
2. Tilt the shaft and align the Super Finish 23 PLUS in the required position:
 - a) Operate with suction system
 - b) Operate with top container
3. Re-tighten the screws.



3.6 TECHNICAL DATA

| | |
|---|-----------------------------------|
| Voltage : | 230 V AC, 50 Hz |
| Fuses : | 16 A time-lag |
| Unit connecting line : | 6 m long, 3 x 1.5 mm ² |
| Max. current consumption: | 7.4 A |
| Degree of protection : | IP 44 |
| Rated input of device: | 1.3 kW |
| Max. operating pressure : | 25 MPa (250 bar) |
| Max. volume flow : | 2.6 l/min |
| Volume flow at 12 MPa (120 bar) with water : | 2.3 l/min |
| Max. temperature of the coating material : | 43 °C |
| Max. viscosity : | 20,000 mPas |
| Empty weight | |
| Model including carriage: | 29 kg |
| Model on frame: | 24 kg |
| Hydraulic oil filling quantity : | |
| Hydraulics housing | 1.15 liter |
| Gears | 0.05 liter |
| Plug connection on device (not included in all models): | 230 Volt ~, 50 Hz |
| max. connection: | 1500 W |
| Max. vibration at the spraygun : | lower than 2.5 m/s ² |
| Max. sound pressure level: | 74 dB (A)* |

*Place of measurement: 1 m distance from unit and 1.60 m above floor, 12 MPa (120 bar) operating pressure, reverberant floor

4 STARTUP

4.1 UNIT WITH SUCTION SYSTEM

1. Ensure that the sealing surfaces of the connections are clean. Ensure that the red inlet (1) is inserted in the coating material inlet (4).
2. Use the enclosed 41 mm wrench to screw the union nut (2) at the suction hose (3) onto the coating material inlet (4) and tighten it.
3. Screw the union nut (5) at the return hose (6) to the connection (7) (22mm).

4.2 UNIT WITH UPPER HOPPER (5 LITRES)

1. Ensure that the sealing surfaces of the connections are clean. Ensure that the red inlet (1) is inserted in the coating material inlet (4).
2. Screw the union nut (5) on the return pipe (6) onto the connection (7).
3. Screw the upper hopper (8) onto the coating material inlet (4).

if using hopper with cleaning ring (TopClean) step 4 and 5

4. Fix TopClean on hopper upside
5. Plug in return pipe into TopClean and screw on union nut

4.3 HIGH PRESSURE HOSE AND SPRAY GUN

1. Screw the high pressure hose (9) onto the hose connection
2. Screw the spray gun (10) onto the high pressure hose
3. Tighten all union nuts on high pressure hose so that no coating material can escape.
4. Screw the tip holder with the selected tip onto the spray gun, align tip and tighten union nut.



Attention

When unscrewing the high pressure hose, hold firmly on the hose connection with a 22mm wrench.

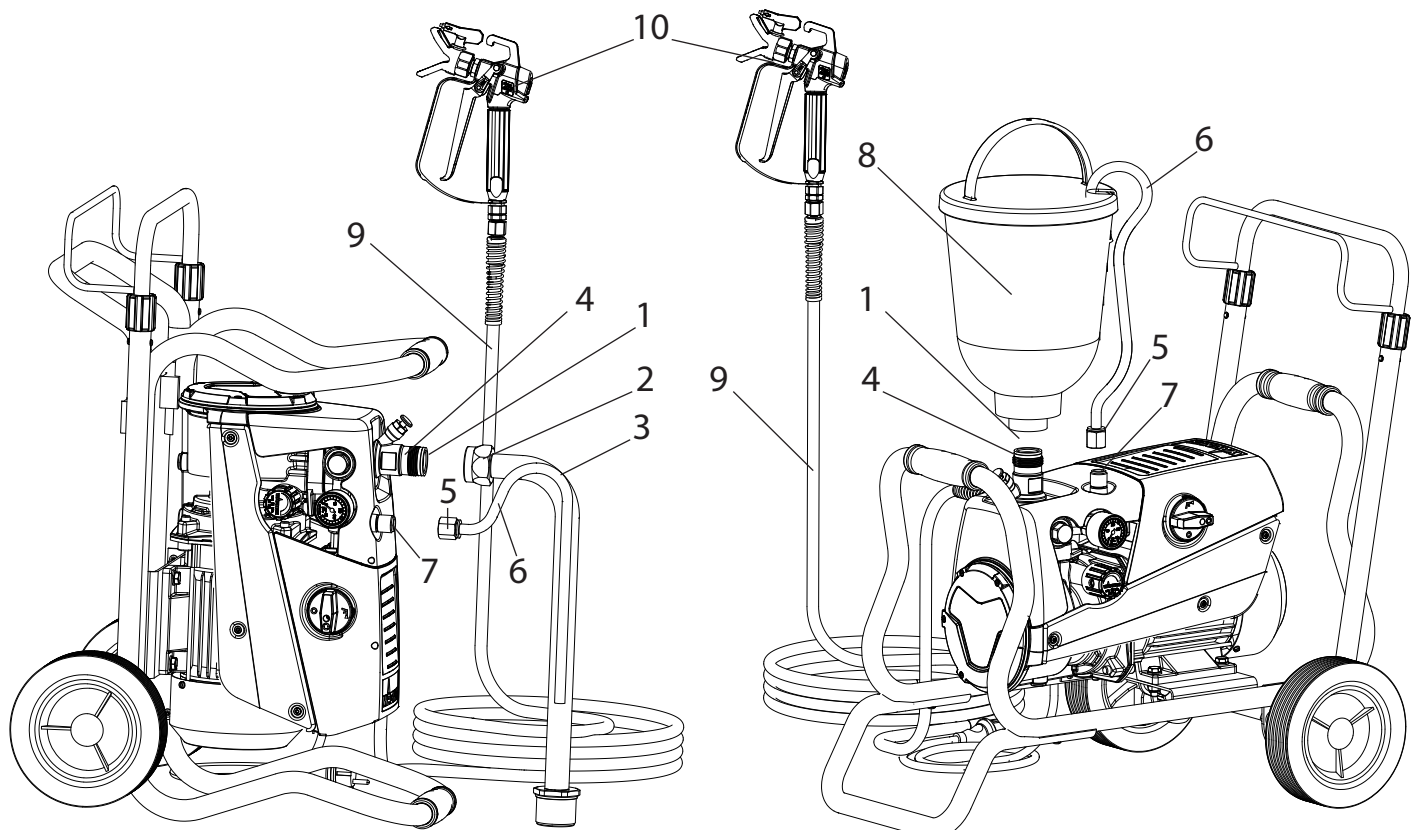
4.4 CONNECTION TO THE MAINS NETWORK



Attention

Connection must always be carried out via an appropriately grounded safety outlet with residual-current-operated circuit-breaker.

Before connecting the unit to the mains supply, ensure that the line voltage matches that specified on the unit's rating plate.



4.5 SOCKET ON UNIT (NOT INCLUDED IN ALL MODELS)

It is possible, for example, to connect an agitator, a working lamp etc with a **maximum of 1500 Watt**.





Always switch on the Super Finish 23 PLUS unit first and then the connected unit. Otherwise the fuse protection of 16 A inside the unit will react.

4.6 CLEANING PRESERVING AGENT WHEN STARTING-UP OF OPERATION INITIALLY


Unit with suction tube

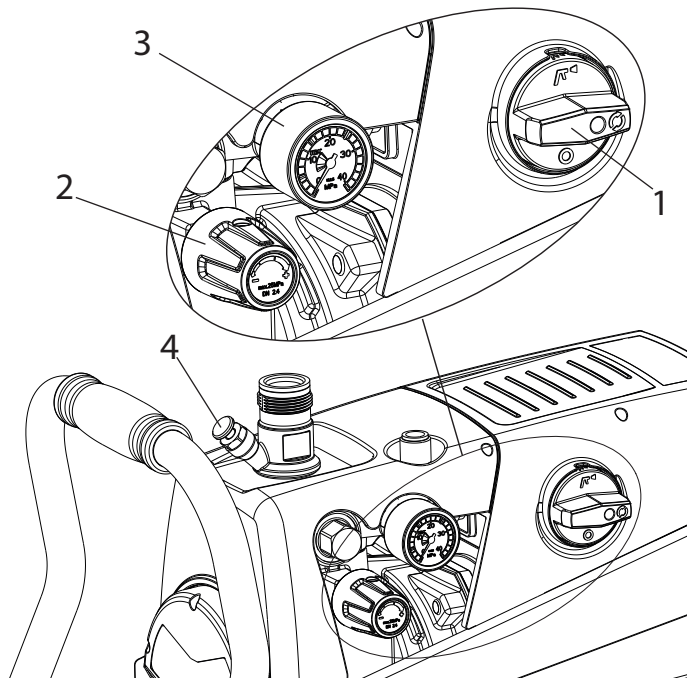
1. Immerse the suction system into a container filled with a suitable cleaning agent (recommendation: water).

Unit with hopper

2. Fill up hopper with a suitable cleaning agent (recommendation: water).
3. Set multifunction switch (1) to  (ON- circulation); the unit commences to run.
4. Turn the pressure regulating knob (2) to the **right** until the stop is reached.
5. Wait until cleaning agent is emitted from the return hose.
6. Turn the pressure regulating knob (2) back approx. one rotation.
7. Set multifunction switch (1) to  (spray). Pressure is rising up inside the high pressure hose (visible at pressure gauge)
8. Point the tip of the spray gun into an open collecting container and pull the trigger guard at the spray gun.
9. The pressure is increased by turning the pressure regulating knob (2) to the right. Set approx. 10 MPa (100 bar) at the pressure gauge.
10. Spray the cleaning agent out of the unit for approx. 1 - 2 min. (~5 litres) into the open collecting container.

4.7 VENTILATE UNIT (HYDRAULIC SYSTEM) IF THE SOUND OF INLET VALVE IS NOT AUDIBLE

1. Switch on the unit.
2. Turn pressure regulating knob (2) **three revolutions** to the **left**.
3. Set multifunction switch (1) to  (ON - circulation). The hydraulic system is ventilated. Leave the unit on for two to three minutes.
4. Then turn pressure regulating knob (2) to the **right** until stop.
5. Press inlet valve pusher (4). Sound of the inlet valve is audible.
6. If not, repeat points 2 and 4





4.8 TAKING THE UNIT INTO OPERATION WITH COATING MATERIAL

Unit with suction tube

1. Immerse the suction system into a container filled with coating material.

Unit with hopper

2. Fill coating material into the hopper.
3. Press inlet valve pusher (4) several times to release possibly clogged inlet valve
4. Set multifunction switch (1) to  (ON - circulation); the unit will start.
5. Turn the pressure regulating knob (2) to the **right** until the stop is reached.
When the noise of the valves changes, the unit is bled and takes in coating material.
6. If coating material exits from the return hose, turn the pressure regulating knob (2) back approx. 1 rotation.
7. Set multifunction switch (1) to  (spray). Pressure is rising up inside the high pressure hose (visible at pressure gauge (3)).
8. Pull of the spray gun and spray into an open collecting container in order to remove the remaining cleaning agent from the unit. When coating materials exits from the tip, close the spray gun.
9. Adjust the spraying pressure by turning the pressure regulating knob (2).
10. The unit is ready to spray.

5 SPRAYING TECHNOLOGY

Move the spray gun evenly during the spraying process. If this is not observed, an irregular spraying appearance will be the result. Carry out the movement with the arm, not with the wrist. A parallel distance of approx. 30 cm between the tip and the surface to be coated should always be observed. The lateral limitation of the spray fan should not be too distinct. The edge of spraying should be gradual to facilitate overlapping of the next coat. The spray gun should always be held at an angle of 90° to the surface to be coated. A spray fan aimed obliquely at the surface to be coated leads to an unwanted spray cloud.

To achieve perfect surfaces at varnishing works, special accessories are available at Wagner, e.g. FineFinish tips or an AirCoat gun set. Your Wagner dealer will advise you.

6 HANDLING THE HIGH-PRESSURE HOSE

The unit is equipped with a high-pressure hose specially suited for diaphragm pumps.

| | |
|-------------------|--|
| Danger | Danger of injury through leaking high-pressure hose. Replace any damaged high-pressure hose immediately. Never repair defective high-pressure hoses yourself! |
|-------------------|--|

The high-pressure hose is to be handled with care. Avoid sharp bends and folds: the smallest bending radius is about 20 cm. Do **not drive over** the high-pressure hose. Protect against sharp objects and edges.

Never pull on the high-pressure hose to move the device.

Make sure that the high-pressure hose cannot twist. This can be avoided by using a Wagner spray gun with a swivel joint and a hose system.

| | |
|--|--|
| | When using the high-pressure hose while working on scaffolding, it is best to always guide the hose along the outside of the scaffolding. |
|--|--|

| | |
|--|--|
| | The risk of damage rises with the age of the high-pressure hose. Wagner recommends replacing high-pressure hoses after 6 years. |
|--|--|

| | |
|--|---|
| | Only use WAGNER original-high-pressure hoses with internal heating in order to ensure functionality, safety and durability. |
|--|---|



7 INTERRUPTION OF WORK


1. Switch off unit, set multifunction switch to (pressure relief, circulation), then to **0** (OFF).
2. Pull trigger guard of spray gun to decrease the pressure of the high pressure hose and the spray gun.
3. Secure the spray gun, refer to the operating manual of the spray gun.
4. Remove tip from tip holder and store the tip in a small vessel with suitable cleaning agent.
5. Leave the suction system immersed in the coating material or immerse it in the corresponding cleaning agent. The suction filter and unit should not dry out.
6. Cover the material container in order to prevent the paint from drying.


| | |
|--|--|
| | In using quick-drying or two-component coating materials, do not fail to rinse unit through with a suitable cleaning agent during the processing period. |
|--|--|


8 CLEANING THE UNIT


A clean state is the best method of ensuring operation without problems. After you have finished spraying, clean the unit. Under no circumstances may coating material rests dry and harden in the unit. The cleaning agent used for cleaning (only with a flash point above 21 °C) must be suitable for the coating material used.


- **Secure the spray gun**, refer to the operating manual of the spray gun.
Remove and clean the tip.
- **Unit with suction system**
 1. Set multifunction switch to  (ON - circulation).
 2. Remove suction tube from the material container, the return tube remains over the material container.
 3. Immerse the suction system into a container filled with a suitable cleaning agent
 4. Turn the pressure control valve back in order to set a minimal spraying pressure.
 5. Set multifunction switch to  (spray).
 6. Pull the trigger guard of the spray gun in order to pump the remaining coating material from the suction hose, high-pressure hose and the spray gun into an open container (if appropriate, increase the pressure at the pressure control valve slowly in order to obtain a higher material flow).


| | |
|--|--|
|  Attention | The container must be earthed in case of coating materials which contain solvents. |
|--|--|

| | |
|--|--|
|  Attention | Caution! Do not pump or spray in container with small opening (bunghole)! See safety regulations. |
|--|--|



7. Set multifunction switch to  (ON - circulation).
8. Pump suitable cleaning agent in the circuit for several minutes.


| | |
|--|--|
|  i | The cleaning effect is increased by alternatively opening and closing the spray gun. |
|--|--|


9. Set multifunction switch to  (spray).
10. Pump the remaining cleaning agent into an open container until the pump is empty.
11. Switch off the unit


| | |
|---|---|
|  i | Warm water improves the cleaning effect in the case of water-dilutable coating materials. |
|---|---|

- **Unit with upper hopper**

1. Set multifunction switch to  (ON - circulation).
2. Turn the pressure control valve back in order to set a minimal spraying pressure.
3. Set multifunction switch to  (spray).
4. Pull the trigger guard of the spray gun in order to pump the remaining coating material from the hopper, high-pressure hose and the spray gun into an open container (if appropriate, increase the pressure at the pressure control valve slowly in order to obtain a higher material flow).


| | |
|---|--|
|  Attention | The container must be earthed in case of coating materials which contain solvents. |
|---|--|



| | |
|---|--|
|  Attention | Caution! Do not pump or spray in container with small opening (bunghole)! See safety regulations. |
|---|--|

5. Fill up hopper with suitable cleaning agent.
6. Set multifunction switch to  (ON - circulation).
7. Pump suitable cleaning agent in the circuit for several minutes.


with cleaning ring (TopClean) step 8 up to 12

8. Switch reverser knob into a horizontal position.
The cleaning agent will flow around the circumference of the inner hopper wall and will clean it in some minutes, depending of the fouling
9. Switch reverser knob into the upright position.
Cleaning agent is flowing directly into the hopper

| | |
|---|--|
|  i | Do not switch the reverser knob at the cleaning ring into the horizontal position when the pump is loaded with coating material. The holes could be plugged. As a result the cleaning function will be reduced, as the cleaning ring has to clean itself first. |
|---|--|


10. Set multifunction switch to  (spray).
11. Pump the remaining cleaning agent from the hopper, high-pressure hose and the spray gun into an open container
12. Set multifunction switch to  (ON - circulation).
13. Switch off unit

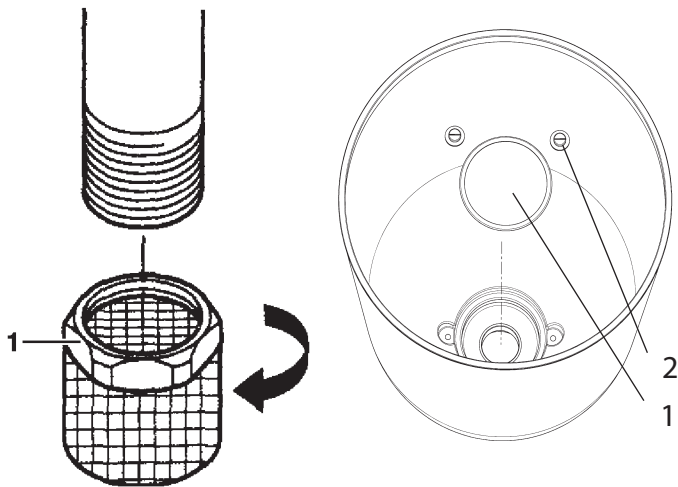
8.1 CLEANING THE UNIT FROM THE OUTSIDE

| | |
|--|--|
|  Danger | <p>First unplug the power plug from the outlet.</p> <p>Danger of short-circuits caused by water ingress! Never spray down the unit with high-pressure or high-pressure steam cleaners.</p> |
|  Danger | <p>Do not put the high-pressure hose into solvents. Use only a wet cloth to wipe down the outside of the hose.</p> |

Wipe down unit externally with a cloth which has been immersed in a suitable cleaning agent.

8.2 SUCTION FILTER

| | |
|--|--|
|  | <p>Clean filters always ensure maximum volume, constant spray pressure and problem-free functioning of the unit.</p> |
|--|--|



suction tube

5l hopper

Unit with suction system

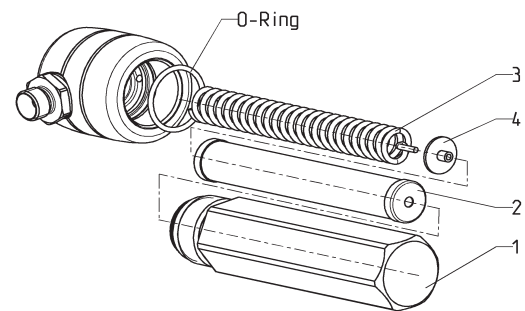
1. Unscrew the filter (Item 1) from the suction tube.
2. Clean or replace the filter.
Carry out cleaning with a hard brush and a corresponding cleaning agent.

Unit with hopper

1. Release screws with a screwdriver (Item 2).
2. Lift and remove filter disk with a screwdriver
3. Clean or replace the filter disk.
Carry out cleaning with a hard brush and a corresponding cleaning agent.

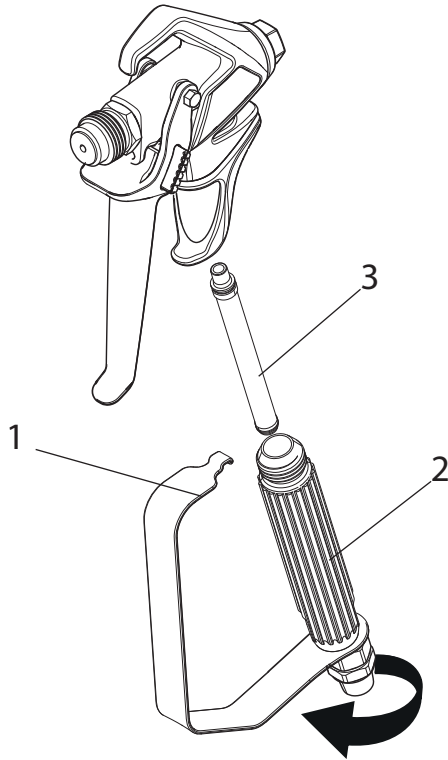
8.3 HIGH-PRESSURE FILTER

1. Switch off unit – set multifunction switch to **0** (OFF).
2. Open the high-pressure filter and clean the filter insert. To do so:
3. Unscrew the filter housing (1) by hand.
4. Remove the filter insert (2) and pull out the bearing spring (3).
5. Clean all the parts with the corresponding cleaning agent. If compressed air is available – blow through the filter insert and bearing spring.
6. When mounting the filter ensure that the bearing ring (4) in the filter insert is positioned correctly and check the O-ring at the filter housing for damage.
7. Screw on the filter housing by hand until it stops (a higher tightening force only impedes later dismantling).



8.4 CLEANING THE AIRLESS SPRAY GUN

1. Rinse the Airless spray gun with a suitable cleaning agent under lower operating pressure.
2. Clean the tip thoroughly with a suitable cleaning agent so that no suitable coating material rests remain.
3. Clean the outside of the Airless spray gun thoroughly.



Insertion filter in the Airless spray gun

1. Unclip the top of the trigger guard (1) from the gun head.
2. Using the bottom of the trigger guard as a wrench, loosen and remove the handle assembly (2) from the gun head.
3. Pull the old filter (3) out of the gun head. Clean or replace.
4. Slide the new filter, tapered end first, into the gun head.
5. Thread the handle assembly into the gun head. Tighten with the trigger wrench.
6. Snap the trigger guard back onto the gun head.

9 SERVICING

9.1 GENERAL SERVICING



We strongly recommend having an annual check carried out by technicians for safety reasons. Please observe all the applicable national regulations.



You can servicing of the unit carried out by the Wagner Service. Favourable conditions can be agreed with a service agreement and/or maintenance packages.

Minimum check before every startup:

1. Check the high-pressure hose, spray gun with rotary joint, power supply cable with plug for damage.
2. Check whether the pressure gauge can be read.

Check at periodical intervals:

1. Check inlet and outlet valve according wear. Clean it and replace worn out parts.
2. Check all filter inserts (spray gun, suction system) clean it and replace if necessary.

9.2 HIGH-PRESSURE HOSE

Inspect the high-pressure hose visually for any notches or bulges, in particular at the transition in the fittings. It must be possible to turn the union nuts freely. A conductivity of less than

1 MΩ must exist across the entire length.




Have all the electric tests carried by the Wagner Service.



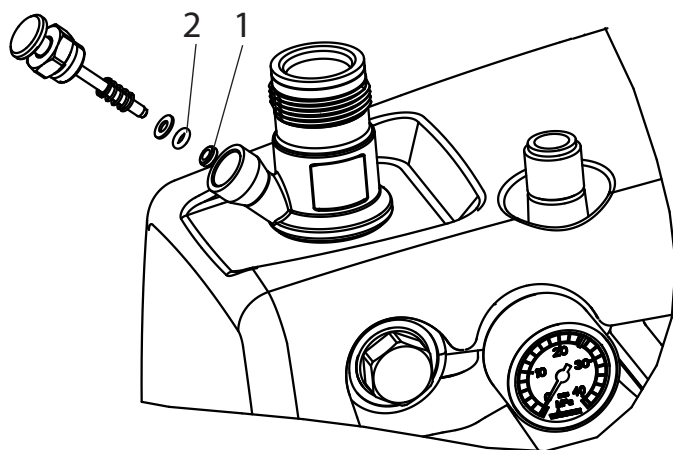
The risk of damage rises with the age of the high-pressure hose. Wagner recommends replacing high-pressure hoses after 6 years.

10 REPAIRS AT THE UNIT

| | |
|--|---|
|  Danger | <p>Switch the unit off. Before all repair work: Unplug the power plug from the outlet.</p> |
|--|---|

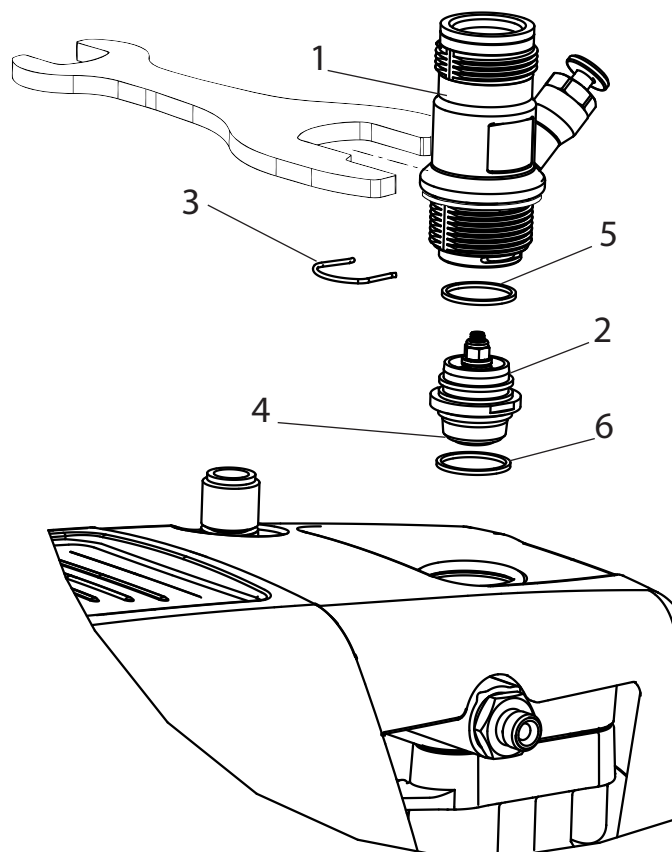
10.1 INLET VALVE PUSHER

1. Use a 17 mm spanner to screw out the inlet valve button.
2. Replace the wiper (1) and O-ring (2).



10.2 INLET VALVE

1. Place the enclosed 30 mm wrench on the trigger housing (1).
2. Loosen the trigger housing (1) with light blows of a hammer on the end of the wrench.
3. Screw out the trigger housing with the inlet valve (2) from the paint section.
4. Pull of the clasp (3) using the enclosed screwdriver.
5. Place the enclosed 30 mm wrench on the inlet valve (2). Turn out the inlet valve carefully.
6. Clean the valve seat (4) with a cleaning agent and brush (ensure that no brush hairs are left behind).
7. Clean the seals (5, 6) and check for damage. Replace, if necessary.
8. Check all the valve parts for damage. In case of visible wear replace the inlet valve.

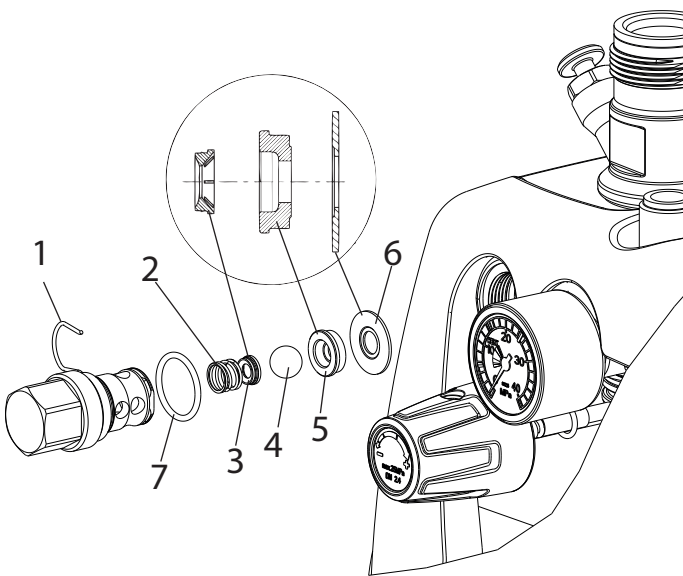


Installation

1. Insert the inlet valve (2) into the trigger housing (1) and secure with the clasp (3). Ensure that the (black) seal (5) is mounted in the trigger housing.
2. Screw the unit from the trigger housing and the inlet valve into the paint section. The same (black) seal (6) has to be mounted in the paint section.
3. Tighten the trigger housing with the 30 mm wrench and tighten with three light blows of the hammer on the end of the wrench. (Corresponds to approx. 90 Nm tightening torque).

10.3 OUTLET VALVE

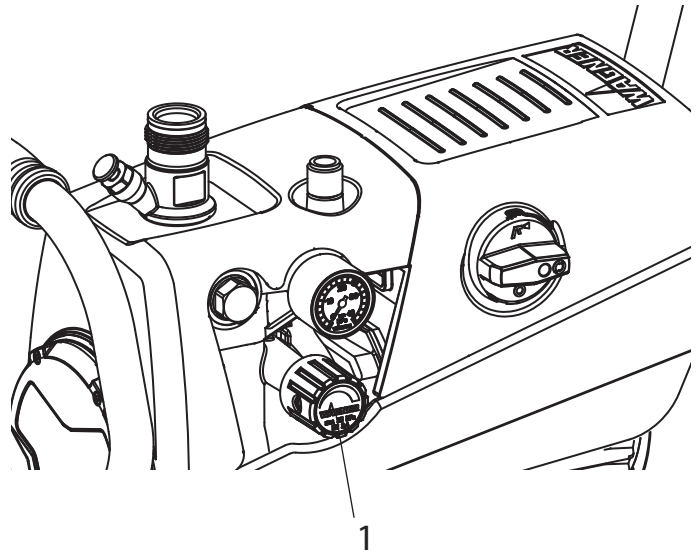
1. Use a 22 mm wrench to screw the outlet valve from the paint section.
2. Carefully pull of the clasp (1) using the enclosed screwdriver. The compression spring (2) presses ball (4) and valve seat (5) out.
3. Clean or replace the components.
4. Check the O-ring (7) for damage.
5. Check the installation position when mounting the spring support ring (3) (clipped onto spring (2)), outlet valve seat (5) and seal (6), refer to figure.



10.4 PRESSURE CONTROL VALVE



Only have the pressure control valve (1) replaced by the customer service.
The max. operating pressure has to be reset by the customer service.



10.5 TYPICAL WEAR PARTS

Despite the use of high-quality materials the highly abrasive effect of the paints means that wear can occur at the following parts:

Inlet valve (spare part Order No.: 0344700)

For replacing refer to Section 10.2

(failure becomes noticeable through performance loss and/or poor or no suction)

Outlet valve (spare part Order No.: 0341702)

For replacing refer to Section 10.3

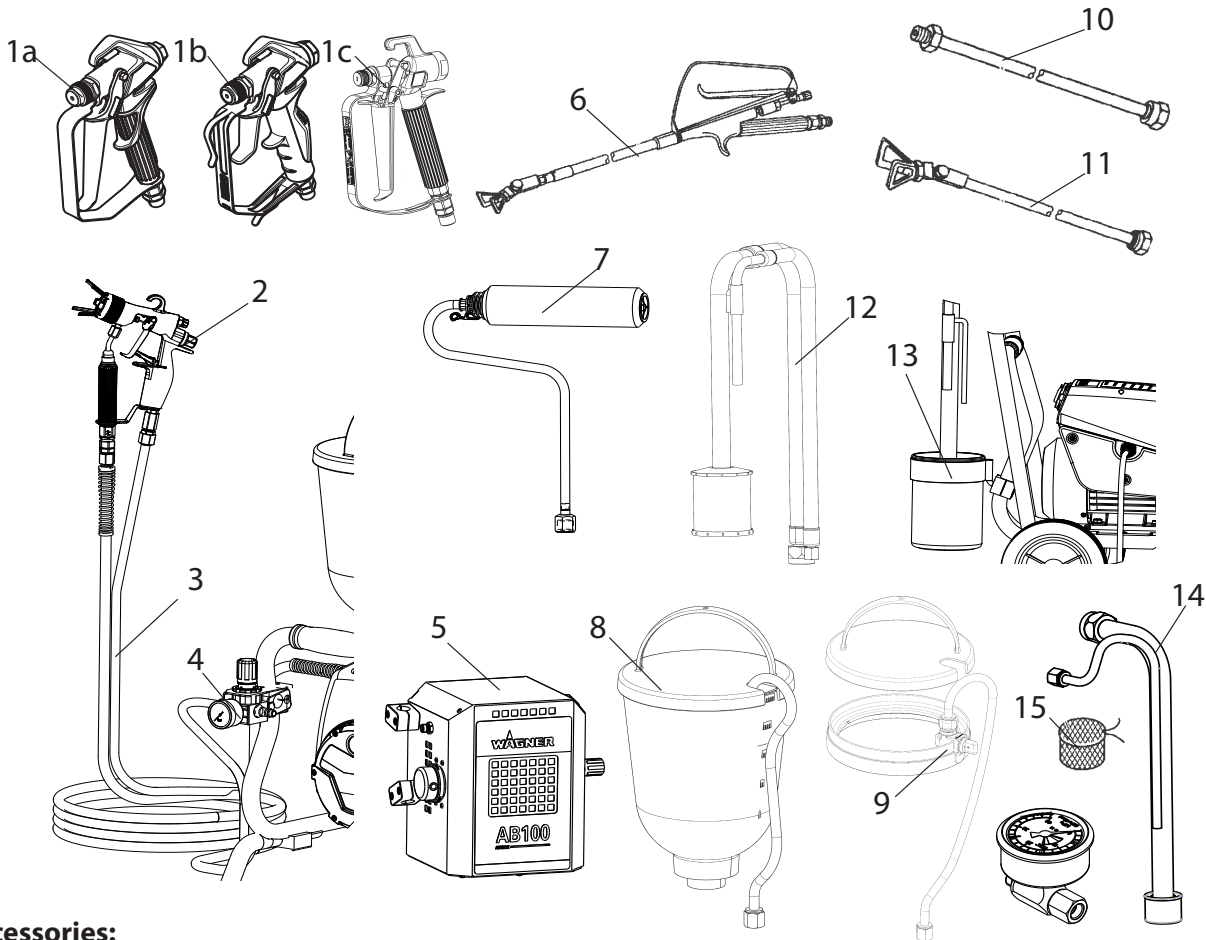
(failure becomes noticeable through performance loss and/or poor suction) The outlet valve is usually considerably more durable than the inlet valve. Thorough cleaning may already help here.

10.6 REMEDY IN CASE OF FAULTS

| TYPE OF MALFUNCTION | WHAT ELSE? | POSSIBLE CAUSE | MEASURES FOR ELIMINATING THE MALFUNCTION |
|---------------------------------|--|--|--|
| Unit does not start | Multifunction switch can not switched on | No voltage applied | Check voltage supply |
| | | Unit fuse has triggered | Let the motor cool down |
| | | Multi-function switch not set back previously to „0“ | Set multi-function switch to „0“ and then switch back on |
| Unit does not suck in | Air bubbles do not exit at the return hose | Inlet valve clogged | Press the inlet valve button until the stop is reached several times by hand |
| | | Inlet/outlet valve soiled / foreign bodies (e.g. threads) drawn in / worn | Remove the valves and clean then (-> refer to Section Pkt.10.2/10.3) / replace worn parts |
| | | Pressure control valve turned down completely | Turn the pressure control valve to the right until the stop is reached |
| | Air bubbles exit from the return hose | Unit is sucking in outside air | Check: Suction system tightened properly? Cleaning connection (if available) at rigid suction tube screwed tight and not leaking? Inlet valve button leaky? -> Replace wiper and O-ring (-> refer to Section 10.1) The red entry is missing in the coating material entrance (-> see 4.1) |
| Unit does not generate pressure | Unit has sucked in | Air in the oil circuit | Bleed the oil circuit in the unit by turning the pressure control valve completely to the left (until overturning) and let it run approx. 2 – 3 min. Then turn the pressure control valve to the right and set the spraying pressure (repeat process several times, if necessary). Process is assisted by positioning the unit vertically. |
| | Unit reached pressure, but the pressure collapses, also at the pressure gage, during spraying. | Suction filter clogged | Check the suction filter. If necessary, clean/replace |
| | | Paint cannot be worked in this state. Due to its properties the paint clogs the valves (inlet valve) and the delivery rate is too low. | Dilute the paint |
| | Unit reached pressure, but the pressure collapses during spraying. pressure gage still shows high pressure | Clogged filter do not let enough paint pass | Check/clean the (high-pressure filter) gun filter |
| | | Tip clogged | Clean the tip (-> refer to Section 10.1) |
| | Unit does not generate the max. pressure possible. Paint nevertheless exits at the return hose. | Relief valve defective | Please contact Wager Customer Service |

11 SPARE PARTS AND ACCESSORIES

11.1 SUPER FINISH 23 PLUS ACCESSORIES



Accessories:

| ITEM | DESIGNATION | ORDER NO. |
|------|--|----------------------|
| 1a | Spray gun Vector Pro (2-finger) Spritzpistole Vector Pro (4 Finger) | 0538 041 0538 040 |
| 1b | Spray gun Vector Pro (2-finger and 4-finger) | 0538 043 |
| 1c | Spray gun AG-14 (stainless steel) | 0502081A |
| 2 | AirCoat spray gun AC 4500 (blue) | 2368 269 |
| 3 | Double hose HP hose DN-3, 7.5 m | 9984 564 9984 583 |
| 4 | AirCoat-controler set | 0340 250 |
| 5 | AirBoost: Compressor for AirCoat | 2347 935 |
| 6 | Pole gun Length 120cm; G thread 7/8" Length 200cm; G thread 7/8" | 0296 441 0296 442 |
| 7 | Inner-Feed Roller | 2418370 |
| 8 | Hopper 5l | 0341 265 |
| 9 | Hopper cleaning ring (TopClean) | 0340 930 |

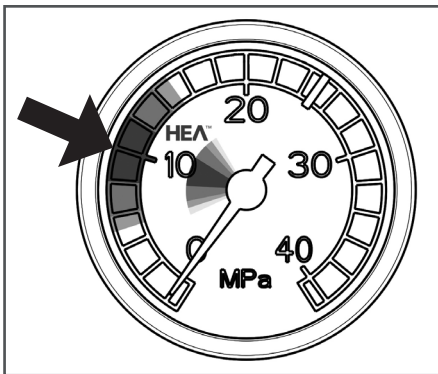
| ITEM. | DESIGNATION | ORDER NO. |
|-------|--|--|
| 10 | Tip extension Length 12.5 cm Length 20 cm Length 50 cm Length 75 cm | 2418853 2418854 2418855 2418856 |
| 11 | Tip extension with Slewable knee joint Length 90 cm Length 180 cm | 2418862 2418863 |
| 12 | Suction system (flexible) for dispersionen | 0034 630 |
| 13 | Cleaning container for suction system with holder (only for flexible suction system) | 2343 481 |
| 14 | Suction system (rigid) for dispersions | 2342 879 |
| 15 | Filter bag, mesh width 0,3 mm | 0097 531 |
| 16 | Pressure gauge (HEA) | 2383 995 |



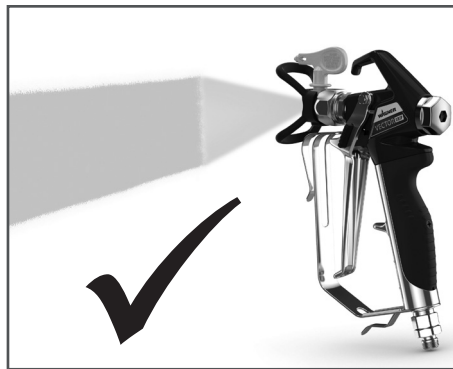
HEA NOZZLES FOR LOW-MIST SPRAYING AT LOW PRESSURE

HEA stands for High Efficiency Airless, an innovative nozzle technology revolutionising airless spraying. HEA nozzles allow the pressure of the spray device to be reduced right down and allow it to work in the low-pressure range (ideally at 80 - 140 bar). The nozzles can be used with all TradeTip 3 nozzle holders and WAGNER devices.

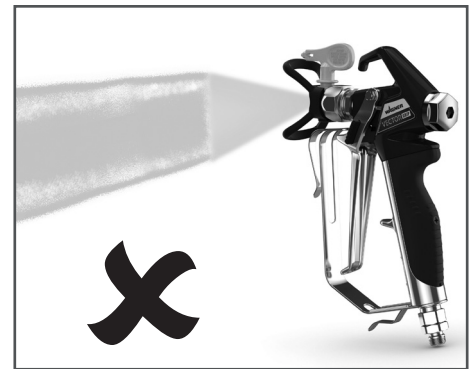
Some paints may need to be diluted to achieve the best result possible. The experts at Wagner application technology have therefore tested a wide range of materials for you. Their recommendations can be found in the Wagner Spray Guide at sprayguide.wagner-group.com.



Set the low pressure in the HEA range and start.



Even spray pattern without spray edges.



If edges are visible, slowly increase the pressure.

HEA tip table



All of the tips in the table below are supplied together with the appropriate gun filter.

| Application | Tip marking | Spray angle | Bore inch / mm | Spraying width mm 1) | Gun filter | Order no. |
|---|-------------|-------------|----------------|----------------------|------------|-----------|
| Synthetic-resin paints PVC paints | 211 | 20° | 0.011 / 0.28 | 120 | red | 0554211 |
| | 311 | 30° | 0.011 / 0.28 | 150 | red | 0554311 |
| | 411 | 40° | 0.011 / 0.28 | 190 | Rot | 0554411 |
| Paints, primers Fillers | 213 | 20° | 0.013 / 0.33 | 120 | red | 0554213 |
| | 313 | 30° | 0.013 / 0.33 | 150 | red | 0554313 |
| | 413 | 40° | 0.013 / 0.33 | 190 | red | 0554413 |
| Fillers Rust protection paints | 415 | 40° | 0.015 / 0.38 | 190 | yellow | 0554415 |
| | 515 | 50° | 0.015 / 0.38 | 225 | yellow | 0554515 |
| | 615 | 60° | 0.015 / 0.38 | 270 | yellow | 0554615 |
| Rust protection paints Latex paints Dispersions | 417 | 40° | 0.017 / 0.43 | 190 | white | 0554417 |
| | 517 | 50° | 0.017 / 0.43 | 225 | white | 0554517 |
| | 617 | 60° | 0.017 / 0.43 | 270 | white | 0554617 |
| Rust protection paints Latex paints Dispersions | 519 | 50° | 0.019 / 0.48 | 225 | white | 0554519 |
| | 619 | 60° | 0.019 / 0.48 | 270 | white | 0554619 |
| Flame retardant | 421 | 40° | 0.021 / 0.53 | 190 | white | 0554421 |
| | 521 | 50° | 0.021 / 0.53 | 225 | white | 0554521 |
| | 621 | 60° | 0.021 / 0.53 | 270 | white | 0554621 |

1) Spray width at about 30 cm to the object and 100 bar (10 MPa) pressure with synthetic-resin paint 20 DIN seconds.

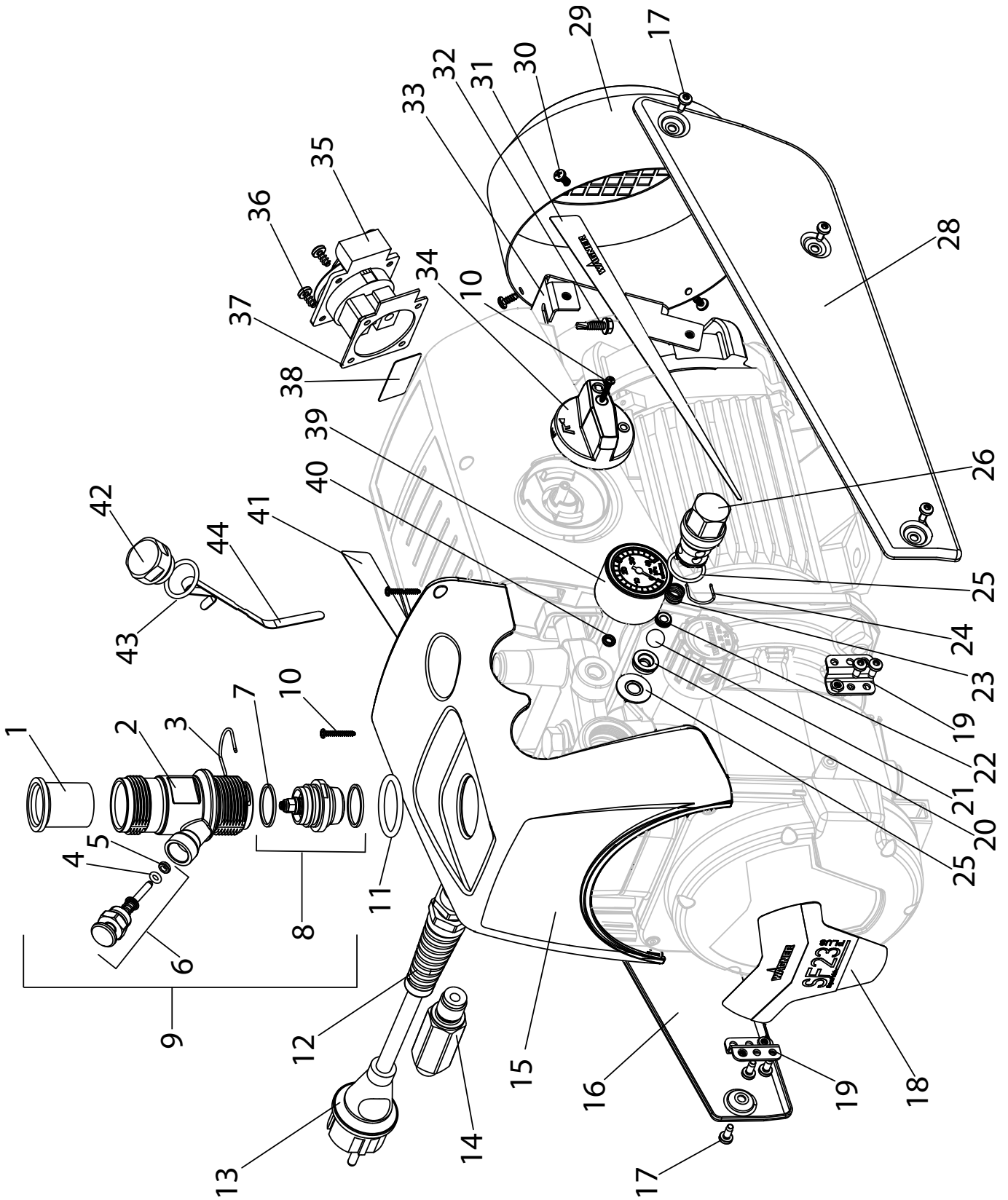


You can find further accessories for optimised working at <https://go.wagner-group.com/accessories-professional>

11.2 SPARE PARTS LIST SF 23 PLUS

| ITEM | ORDER-NO | DESIGNATION |
|------|----------|--|
| 1 | 0340 339 | Inlet |
| 2 | 2334 383 | Inlet valve trigger housing |
| 3 | 2369 455 | Clasp |
| 4 | 9971 486 | O-ring |
| 5 | 0341 316 | Wiper |
| 6 | 0341 336 | Inlet valve trigger (incl. pos. 4, 5) |
| 7 | 0341 331 | Sealing ring |
| 8 | 2393 043 | Inlet valve (incl. pos.7 (2x)) |
| 9 | 2402 347 | Inlet valve complete. (pos. 1,2,3,6,8) |
| 10 | 0421 328 | Oval head screw 3, 17x20 |
| 11 | 2337 138 | O-ring 31.4 x 3.55 |
| 12 | 9952 685 | Cable threaded joint |
| 13 | 0261 352 | Mains cable H07-RNF 3x 1.5mm ² , 6m long |
| 14 | 2409 463 | Double socket NPS 1/4" |
| 15 | 2334 038 | Cover |
| 16 | 2436 070 | Cover (right) |
| 17 | 2315 382 | Oval head screw M4x10 |
| 18 | 2339 570 | Label SF 23 PLUS |
| 19 | 2437 157 | Sheet metal bracket assy. |
| 20 | 0341 327 | Outlet valve seat |
| 21 | 9941 501 | Ball 10 |
| 22 | 0253 405 | Spring support ring |
| 23 | 0341 326 | Pressure spring |
| 24 | 0341 328 | Clasp |
| 25 | 2393 105 | Sealing ring and o-ring 20x2 |
| | 2393 106 | Outlet valve, service set (pos. 20-25) |
| 26 | 2369 445 | Outlet valve complete (incl. pos.20-25) |
| 28 | 2436 068 | Cover (left) |
| 29 | 2369 506 | Fan cover |
| 30 | 9902 225 | Oval head screw 3.5x9.5 |
| 31 | 2341 466 | Label (left) |
| 32 | 9903 348 | Self drilling screw |
| 33 | 2337 484 | Connecting plate |
| 34 | 2342 501 | Multi-function switch |
| 35 | 9950 241 | Socket |
| 36 | 9905 113 | Oval head screw 5x10 |

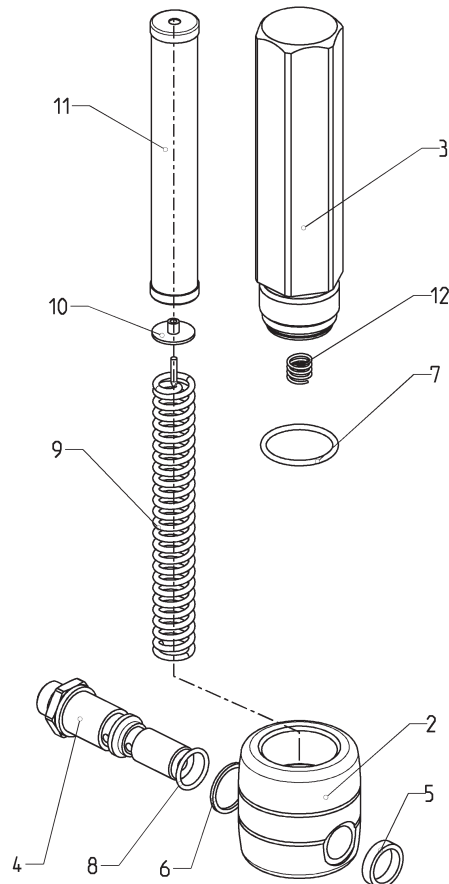
| ITEM | ORDER-NO | DESIGNATION |
|------|----------|---------------------|
| 37 | 9950 242 | Seal |
| 38 | 2342 535 | Label |
| 39 | 2343 666 | Pressure gauge |
| 40 | 9970 218 | Sealing ring |
| 41 | 2341 465 | Label (right) |
| 42 | 0341 349 | Oil cap screw |
| 43 | 9971 146 | O-ring |
| 44 | 2362 313 | Oil measuring stick |



Spare parts diagram SF 23 PLUS

11.3 SPARE PARTS LIST HIGH-PRESSURE FILTER

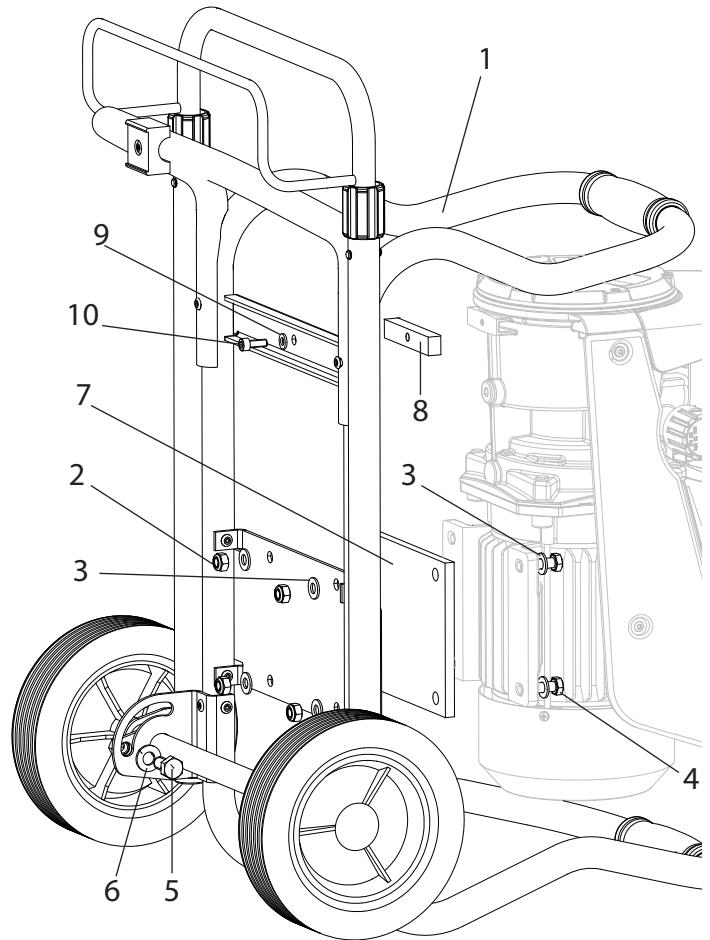
| ITEM | ORDER NO. | DESIGNATION |
|------|-----------|---------------------------------------|
| 1 | 0097 121 | High-pressure filter HF- 01 compl. |
| 2 | 0097 301 | Filter block |
| 3 | 0097 302 | Filter housing |
| 4 | 0097 303 | Hollow screw |
| 5 | 0097 304 | Seal ring |
| 6 | 9970 110 | Seal ring |
| 7 | 9974 027 | O-ring 30x2 (PTFE) |
| 8 | 9971 401 | O-ring 16x2 (PTFE) |
| 9 | 0508 749 | Bearing spring |
| 10 | 0508 603 | Bearing ring |
| 11 | 0508 748 | Filter insert 60 meshes |
| | 0508 450 | Optional: Filter insert 100 meshes |
| | 0508 449 | Filter insert 30 meshes |
| 12 | 9994 245 | Pressure spring |



Spare parts diagram high-pressure filter

11.4 SPARE PARTS LIST TROLLEY

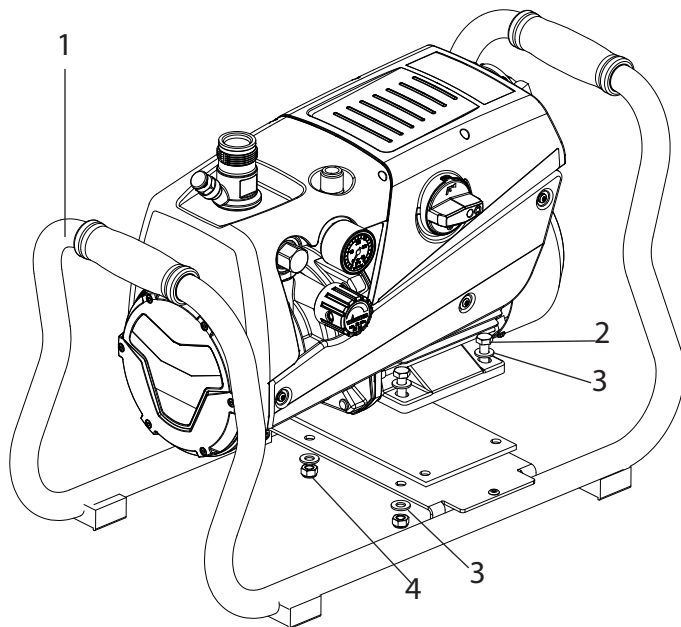
| ITEM | ORDER NO. | DESIGNATION |
|------|-----------|----------------------------|
| 1 | 2343 670 | Trolley assy. (SF 23 PLUS) |
| 2 | 9910 208 | Hexagon nut M8 |
| 3 | 9920 102 | Washer A 8.4 |
| 4 | 9900 118 | Hexagon screw M8x30 |
| 5 | 3054 019 | Hexagon screw M10x20 |
| 6 | 9920 106 | Washer A 10.5 |
| 7 | 2340 954 | Intermediate plate |
| 8 | 2362 484 | Absorber |
| 9 | 9920 311 | Washer A 6,4 |
| 10 | 9900 325 | Hexagon screw M6x16 |



Spare parts diagram trolley SF 23 PLUS

11.5 SPARE PARTS LIST FRAME

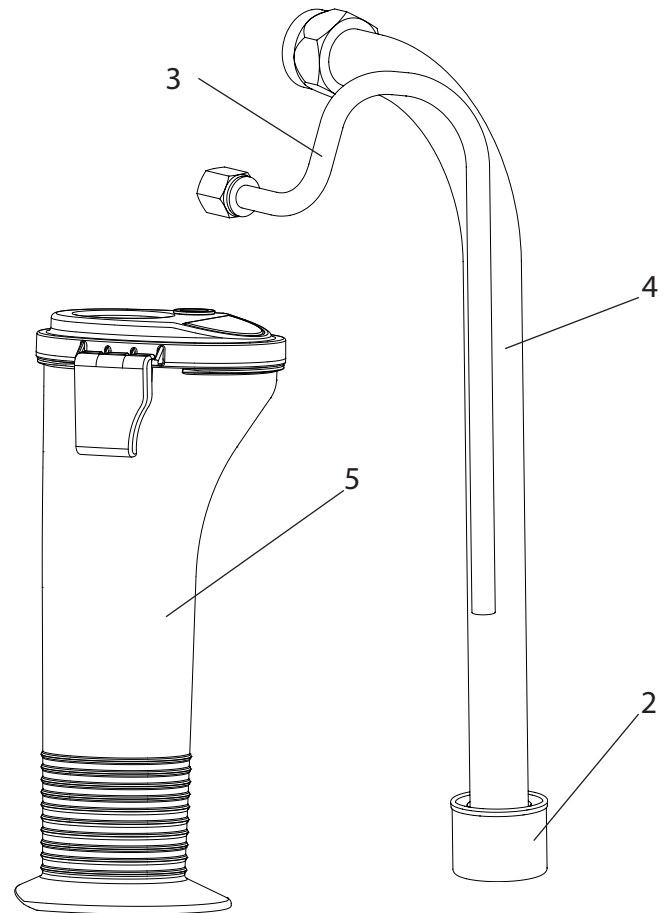
| ITEM | ORDER NO. | DESIGNATION |
|------|-----------|---------------------|
| 1 | 2343 637 | Frame complete |
| 2 | 9900 118 | Hexagon screw M8x30 |
| 3 | 9920 102 | Washer A 8.4 |
| 4 | 9910 208 | Hexagon nut M8 |



Spare parts diagram frame

11.6 SPARE PARTS LIST SUCTION SYSTEM (RIGID)

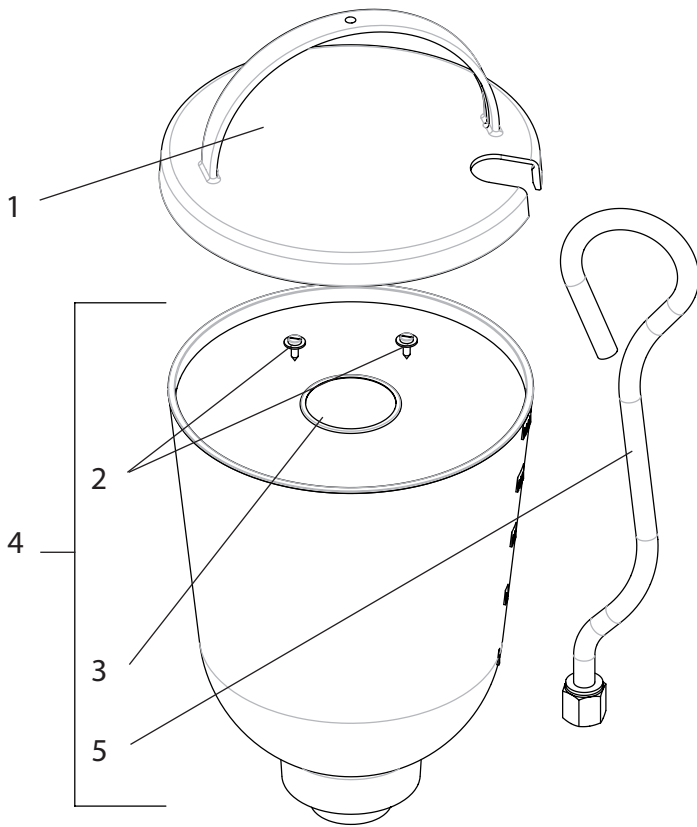
| ITEM | ORDER NO. | DESIGNATION |
|------|-----------|--|
| 1 | 2342 879 | Suction system assy. (incl. pos. 2-4) |
| 2 | 2323 325 | Filter, mesh width 1 mm |
| | 0250 245 | Optional: Filter, mesh width 0,8 mm |
| 3 | 2343 688 | Return pipe |
| 4 | 2342 682 | Suction tube |
| 5 | 2306 987 | PumpRunner |



Spare parts diagram suction system (rigid)

11.7 SPARE PARTS LIST HOPPER 5L

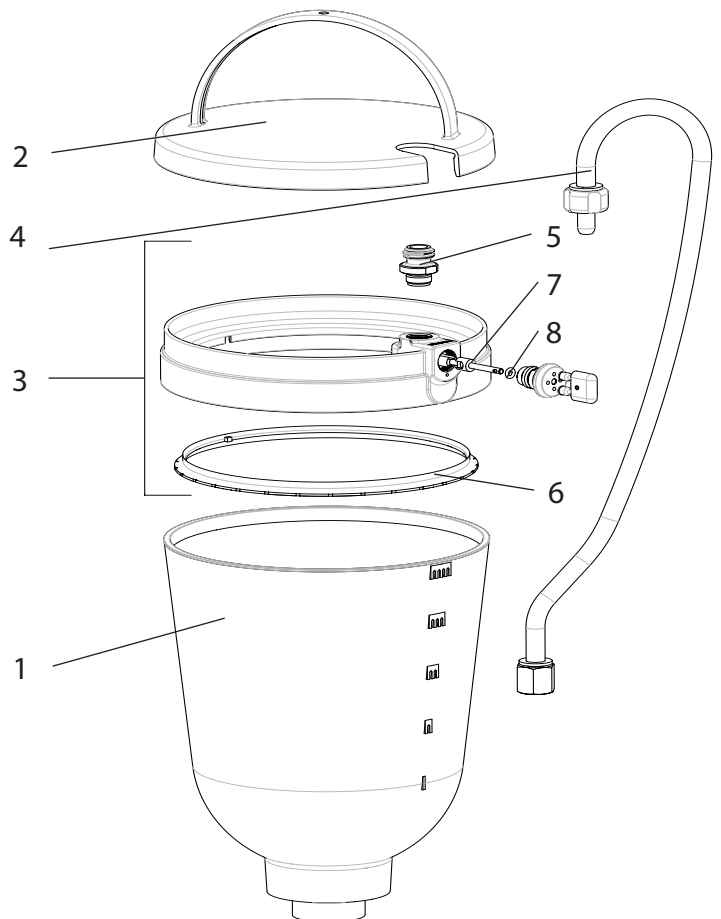
| ITEM | ORDER-NO | DESIGNATION |
|------|----------|---|
| - | 0341 265 | Hopper 5l, assy. |
| 1 | 0340 901 | Cover |
| 2 | 9902 306 | Sheet metal screw 3,9x13 (2) |
| 3 | 0037 607 | Filter disk, mesh width 0,8 mm |
| | 0003 756 | Optional: Filter disk, mesh width 0,4 mm |
| 4 | 0340 904 | Hopper |
| 5 | 0340 908 | Return pipe |



Spare parts diagram hopper

11.8 SPARE PARTS LIST HOPPER WITH TOPCLEAN

| ITEM | ORDER-NO | DESIGNATION |
|------|----------|----------------------------------|
| - | 0341 268 | Hopper 5l with TopClean, assy. |
| 1 | 0340 904 | Hopper 5l (filter disc see 11.7) |
| 2 | 0340 901 | Cover |
| 3 | 0340 271 | TopClean, assy. |
| 4 | 0340 270 | Return pipe |
| 5 | 0340 499 | Screwing |
| 6 | 0340 466 | Distributor ring |
| 7 | 0340 500 | Rotary valve shaft |
| 8 | 9971 486 | O-ring 4x2 (FFPM) |



Spare parts diagram hopper with TopClean



TESTING OF THE UNIT

For safety reasons, we would recommend having the device checked by an expert as required but at least every 12 months to ensure that it can continue to operate safely.

In the case of unused devices, the check can be postponed until they are next started up.

All (potentially deviating) national inspection and maintenance regulations must also be observed.

If you have any questions, please contact the customer service team at Wagner.

IMPORTANT INFORMATION ON PRODUCT LIABILITY

According to an EU directive, the manufacturer is only liable without limitation for faults in the product if all parts come from the manufacturer or have been approved by the manufacturer and have been mounted to the device and are operated properly. If third-party accessories or spare parts are used, the manufacturer is exonerated wholly or partly from his/her liability if use of the third-party accessories or spare parts have caused a defect in the product. In extreme cases, the relevant authorities can completely prohibit using the entire device.

With original WAGNER accessories and spare parts, compliance with all safety regulations is guaranteed.

NOTE ON DISPOSAL

In observance of the European Directive 2002/96/EC on waste electrical and electronic equipment and implementation in accordance with national law, this product is not to be disposed of together with household waste material but must be recycled in an environmentally friendly way!



Wagner or one of our dealers will take back your used Wagner waste electrical or electronic equipment and will dispose of it for you in an environmentally friendly way. Please ask your local Wagner service centre or dealer for details or contact us direct.

EU Declaration of conformity

We declare under sole responsibility that this product (type D409C, type D412E) conforms to the following relevant stipulations: 2006/42/EC, 2014/30/EU, 2011/65/EU, 2012/19/EU

Applied harmonised norms:

EN ISO 12100, EN 60204-1, EN 1953, EN IEC 61000-3-2, EN 61000-3-3, EN IEC 61000-6-1, EN IEC 61000-6-3

The EU declaration of conformity is enclosed with the product. If required, it can be re-ordered using order number **2343687**.

3 + 2 YEAR GUARANTEE ON THIS WAGNER CONTRACTOR PRODUCT

(Status 03.03.2022)

WAGNER exclusively provides the commercial buyer who has purchased the product from an authorised specialist dealer (hereinafter referred to as the „Customer“) with a guarantee for the products listed on the Internet at <https://go.wagner-group.com/3plus2-info> in addition to the statutory warranty regulations, unless there is a guarantee exclusion.

The guarantee period for WAGNER products (devices) in the contractor's sector is 36 months and begins with the date of purchase of the initial purchase. This guarantee period is extended by a further 24 months if the product is registered within 28 days of purchase on the Internet at <https://go.wagner-group.com/3plus2>.

In cases of commercial rental, industrial use (e.g. use in shift operation) or equivalent use, the guarantee period is 12 months due to the significantly higher load. We reserve the right to carry out a check in individual cases and refuse the guarantee where necessary.

If any material, machining or performance defects are identified in the device within the guarantee period, then the guarantee claims must be made immediately and within a period of no more than 2 weeks following discovery of the defect.

The detailed guarantee conditions can be obtained on request from our authorised WAGNER partners (see website or operating instructions) or in text form on our website:

<https://go.wagner-group.com/pf-warranty-conditions>



Subject to modifications

UKCA Declaration of conformity

We declare under sole responsibility that this product (type: D409C, type D412E) conforms to the following relevant regulations:

Supply of Machinery (Safety) Regulations 2018
Electromagnetic Compatibility Regulations 2016
The Restriction of the Use of Certain Hazardous Substances in Electrical and Electronic Equipment Regulations 2012
The Waste Electrical and Electronic Equipment Regulations 2013

Applied harmonised standards

BS EN ISO 12100, BS EN 60204-1, BS EN 1953, BS EN IEC 61000-3-2, BS EN 61000-3-3, BS EN IEC 61000-6-1, BS EN IEC 61000-6-3

Traduction du mode d'emploi original

Table des matières

| | | | | | |
|----------|--|-----------|-----------|---|-----------|
| 1 | CONSIGNES GÉNÉRALES DE SÉCURITÉ | 55 | 4.5 | Prise électrique sur le groupe (seulement sur certains modèles) | 63 |
| 2 | PRESCRIPTIONS DE SÉCURITÉ POUR LA PULVÉRISATION AIRLESS | 56 | 4.6 | Élimination de l'agent de conservation lors de la première mise en service | 63 |
| 2.1 | Point d'éclair | 56 | 4.7 | Dégazer l'appareil (système hydraulique) si on n'entend pas le bruit de la vanne d'aspiration | 63 |
| 2.2 | Protection contre les risques d'explosion | 56 | 4.8 | Mise en service de l'appareil avec le produit de revêtement | 63 |
| 2.3 | Danger d'explosion et d'incendie par sources d'inflammation lors de la pulvérisation | 56 | 5 | TECHNIQUE DE PULVÉRISATION | 64 |
| 2.4 | Danger de blessure par le jet de pulvérisation | 56 | 6 | MANIPULATION DU TUYAU FLEXIBLE HAUTE PRESSION | 64 |
| 2.5 | Verrouiller le pistolet de pulvérisation contre l'actionnement intempestif | 57 | 7 | INTERRUPTION DE TRAVAIL | 64 |
| 2.6 | Force de recul du pistolet de pulvérisation | 57 | 8 | NETTOYAGE DE L'APPAREIL | 65 |
| 2.7 | Protection respiratoire contre les vapeurs de solvant | 57 | 8.1 | Nettoyage extérieur de l'appareil | 66 |
| 2.8 | Éviter les maladies professionnelles | 57 | 8.2 | Filtre d'aspiration | 66 |
| 2.9 | Pression de service maximale | 57 | 8.3 | Filtre haute pression (accessoire) | 66 |
| 2.10 | Tuyau flexible haute pression | 57 | 8.4 | Nettoyage du pistolet de pulvérisation Airless | 67 |
| 2.11 | Accumulation de charges électrostatiques (production d'étincelles ou de flammes) | 57 | 9 | MAINTENANCE | 67 |
| 2.12 | Utilisation du matériel sur chantier et en atelier | 58 | 9.1 | Maintenance générale | 67 |
| 2.13 | Charge de la prise sur le matériel | 58 | 9.2 | Tuyau flexible haute pression | 67 |
| 2.14 | Ventilation pendant le travail dans un local fermé | 58 | 10 | RÉPARATIONS SUR L'APPAREIL | 68 |
| 2.15 | Dispositifs d'aspiration | 58 | 10.1 | Poussoir de la vanne d'aspiration | 68 |
| 2.16 | Mise à la terre de l'objet à peindre | 58 | 10.2 | Vanne d'aspiration | 68 |
| 2.17 | Nettoyage de l'appareil avec un solvant | 58 | 10.3 | Clapet de refoulement | 69 |
| 2.18 | Nettoyage de l'appareil | 58 | 10.4 | Vanne de réglage de pression | 69 |
| 2.19 | Travaux et réparations sur l'équipement électrique | 58 | 10.5 | Pièces d'usure typiques | 69 |
| 2.20 | Travaux sur des composants électriques | 58 | 10.6 | Aide en cas de pannes | 70 |
| 2.21 | Utilisation sur un terrain incliné | 58 | 11 | PIÈCES DE RECHANGE ET ACCESSOIRES | 71 |
| 3 | VUE D'ENSEMBLE DE L'UTILISATION / DESCRIPTION DE L'APPAREIL | 59 | 11.1 | Accessoires pour Super Finish 23 PLUS | 71 |
| 3.1 | Domaines d'utilisation | 59 | 11.2 | Liste de pièces de rechange de SF 23 PLUS | 74 |
| 3.2 | Produit de revêtement | 59 | 11.3 | Liste de pièces de rechange filtre haute pression (accessoires) | 76 |
| 3.2.1 | Produits de revêtement avec additifs à arêtes vives | 59 | 11.4 | Liste de pièces de rechange du chariot | 76 |
| 3.2.2 | Filtration | 59 | 11.5 | Liste de pièces de rechange de support | 77 |
| 3.3 | Illustrations du matériel | 60 | 11.6 | Liste de pièces de rechange du système d'aspiration | 77 |
| 3.4 | Transport | 60 | 11.7 | Liste de pièces de rechange du récipient supérieur | 78 |
| 3.5 | Transformation du chariot | 61 | 11.8 | Liste de pièces de rechange du récipient supérieur avec TopClean | 78 |
| 3.6 | Caractéristiques techniques | 61 | | Contrôle de l'appareil | 79 |
| 4 | MISE EN SERVICE | 62 | | Indication importante de responsabilité de produit | 79 |
| 4.1 | Appareil avec système d'aspiration | 62 | | Indication de mise au rebut | 79 |
| 4.2 | Appareil avec récipient supérieur (5 litres) | 62 | | Déclaration de garantie | 79 |
| 4.3 | Tuyau flexible haute pression et pistolet de pulvérisation | 62 | | Déclaration de conformité CE | 79 |
| 4.4 | Raccordement au réseau électrique | 62 | | Réseau de service après-vente en Europe | 108 |